

RHYTHM

♩ = 75

GREAT ARE YOU, LORD

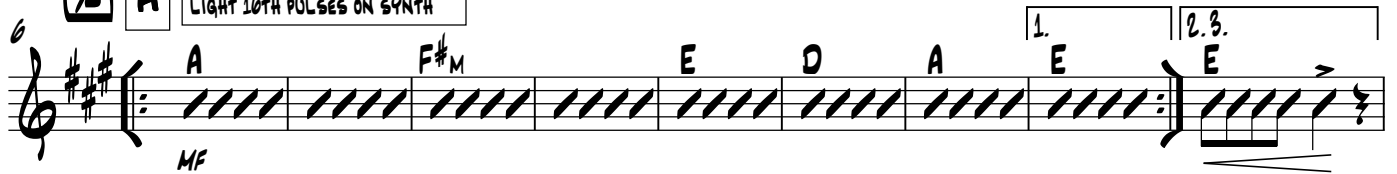
RUSSELL JOHNSON
CHART BY TOM GARBER

1X PADS & 10TH SYNTH ARPS
2X BAND IN - 8TH'S FEEL / 10TH ARPS CONTINUE

PIANO LINE 2X ONLY



A AIRY PADS / EL. QTR. HEAVY VERB
LIGHT 10TH PULSES ON SYNTH



B BAND FULL! 8TH NOTE FEEL - CYMBALS!



TURN

8TH NOTE FEEL - CYMBALS CONTINUE!

60° D.S. TO "A"

PIANO LINE



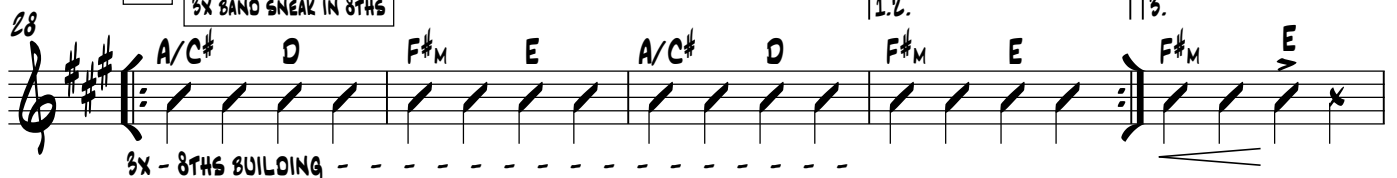
TURN

8TH NOTE FEEL - CYMBALS CONTINUE!

60° D.S. TO "A"



1X PADS & PIANO ONLY
2X MORE PADS
3X BAND SNEAK IN 8THS



PG. 2 OF 2
GREAT ARE YOU, LORD

2

D
BAND FULL!

33

A G² F[#]M⁷ A/E E A G² F[#]M⁷ A/E E

ff

Detailed description: This musical staff contains measures 33 through 40. It begins with a treble clef, a key signature of two sharps (F# and C#), and a common time signature. Measure 33 starts with a diamond-shaped chord symbol 'A' and a dynamic marking 'ff'. Measures 34 through 40 contain rhythmic patterns indicated by diagonal slashes. Above the staff, chord symbols are placed: 'A' (measure 33), 'G²' (measure 34), 'F[#]M⁷' (measure 35), 'A/E E' (measure 36), 'A' (measure 37), 'G²' (measure 38), 'F[#]M⁷' (measure 39), and 'A/E E' (measure 40). The staff ends with a double bar line.

41

F[#]M⁷ E F[#]M⁷ E A

Detailed description: This musical staff contains measures 41 through 43. It begins with a treble clef, a key signature of two sharps (F# and C#), and a common time signature. Measure 41 starts with a diamond-shaped chord symbol 'F[#]M⁷'. Measures 42 through 43 contain rhythmic patterns indicated by diagonal slashes. Above the staff, chord symbols are placed: 'F[#]M⁷' (measure 41), 'E' (measure 42), 'F[#]M⁷' (measure 43), 'E' (measure 44), and 'A' (measure 45). The staff ends with a double bar line.